

COLLEZIONE  
*camicie*  
—  
ShirtCollection



**gary's**  
WORKWEAR

[garysworkwear.com](http://garysworkwear.com)

**Benvenuti nell'eleganza professionale.  
Scopri la nostra nuova collezione di camicie, un catalogo attentamente studiato per portare la moda da lavoro a un livello superiore.  
Concentrandosi sulla perfetta combinazione di stile e funzionalità, la nostra collezione di camicie ridefinisce l'estetica sul posto di lavoro.**

**Dai tagli moderni ai dettagli sofisticati, ogni maglietta è stata creata con l'impegno di dare ai tuoi dipendenti la sicurezza e il comfort che meritano. La qualità dei nostri tessuti garantisce durevolezza, resistenza e un aspetto impeccabile durante tutta la giornata lavorativa.**

**Non si tratta solo di uniformi, si tratta di proiettare un'immagine di professionalità che si distingue in qualsiasi ambiente lavorativo. Scopri la versatilità dei nostri design e come possono elevare l'identità del tuo team.**

**Benvenuti nella nuova era della moda da lavoro.  
Benvenuti nell'eleganza che guida le prestazioni.**

*Welcome to the professional elegance.  
Discover our new shirt collection, a catalog meticulously designed to take work fashion to the next level.  
Focusing on the perfect combination of style and functionality, our shirt collection redefines aesthetics in the workplace.*

*From modern cuts to sophisticated details, each shirt has been created with the commitment to provide your employees with the confidence and comfort they deserve.  
The quality of our fabrics ensures durability, resistance, and an impeccable look throughout the workday.*

*It's not just about uniforms; it's about projecting a professional image that stands out in any work environment. Discover the versatility of our designs and how they can elevate your team's identity.*

*Welcome to the new era of work fashion.  
Welcome to the elegance that drives performance.*

COLLEZIONE  
**camicie**  
—  
**Shirt**Collection



# INDICE INDEX

RIF/REF.	P.
100800	83
100900	85
102100	82
102200	82
102300	84
102400	84
102500	81
102600	81
102800	79
102900	79
103100	78
103200	78
103300	80
120001	75
120002	77
120003	77
120004	75
120005	86
210002	56
210003	64
210005	64
210006	63
210007	63
210008	56
210009	68
210011	68
210012	26
210013	64
210014	64
240001	95
240002	94
240003	96
240004	97
240005	14
240006	17
240008	9
240009	18
240011	41
240012	25
240013	27
240014	70
240015	10
240016	38
240017	47

240018	6
240019	4
240021	53
240022	44
240023	45
240024	39
240025	34
240026	31
240027	30
240028	29
240029	48
240031	5
240100	42
241100	22
242300	43
242900	20
243100	21
243400	36
243600	66
243700	20
243900	33
260001	26
260004	95
260005	94
260006	96
260007	97
260008	99
260009	4
260011	6
260012	45
260013	41
260014	51
260015	44
260016	47
260017	98
260018	27
260019	25
260021	12
260022	70
260023	53
260024	71
260025	34
260026	38
260027	39
260028	31
260029	30

260031	29
260032	48
260033	5
260800	42
261100	33
288000	93
288100	90
288200	91
288300	92
288400	89
295000	90
295100	93
295200	89
296000	91
296100	92
298200	43
298900	66
299300	36
600054	51
651400	54

△	ELYSIAN/POPELINE ELASTAM POPLIN ELASTANE
↑	SERENE/POPELINE ELASTAM POPLIN ELASTANE
▽	COOL DRY/POPELINE ELASTAM POPLIN ELASTANE
⊗	BREEZE/TESSUTO WOVEN
▲	RASO SATIN
○	CRÊPE CREP
⊖	CROSS ELASTIK/INTERLOOK
▲	POPELINE POPLIN
✂	POPE LINE JEANS STINTO STONEWASHED DENIM POPLIN
▲	FIL A FIL ELASTAM FIL A FIL ELASTANE
⊗	AIR DRY/PUNTO PIQUÉ / PIQUE KNIT
⊖	TWILL TWILL
≡	TESSUTO WOVEN
⊗	LINO COTTON LINEN COTTON
⊖	FALSO LINO FAKE LINEN
⊗	CHAMBRAY
⊖	PUNTO KNIT
⊖	OXFORD



# ELYSIAN

SCOPRI L'ECCELLENZA

DISCOVER THE EXCELLENCE



Elasticity



Easy iron



Breathable



Liquid-repellent



**260009**

**Simone**

UOMO MAN

XS-2YL

**240019**

**Nina**

DONNA WOMAN

XS-YL

**ELYSIAN**

POPELINE ELASTAM

POPLIN ELASTANE

130 gr/m<sup>2</sup>

60%CO 37%PES 3%EA

C/001 Nero/Black

C/101 Bianco/White

**Disponibili  
in entrambi i colori  
per uomo e donna.**

*Available  
in both colours  
for man and woman.*

**206200**

OJO DE PERDÍZ

PANTALONI CHINO DONNA

CHINO TROUSERS WOMAN

36-58

**791700**

OJO DE PERDÍZ

PANTALONI CHINO UOMO

CHINO TROUSERS MAN

36-60

C/001 Nero/Black



**260033**  
Nico  
UOMO MAN  
XS-2YL

**240031**  
Bruna  
DONNA WOMAN  
XS-YL

**ELYSIAN**  
POPELINE ELASTAM  
POPLIN ELASTANE  
130 gr/m<sup>2</sup>  
60%CO 37%PES 3%EA

C/149 Verde cachi/Kaqui green  
C/142 Sabbia/Sand  
C/104 Blu Navy/Navy blue



**Disponibili in tutti i colori  
per uomo e donna.**

*Available in all colours  
for man and woman.*



**260011**

Loris

UOMO MAN

SLIM FIT.

XS-2YL

**240018**

Rachele

DONNA WOMAN

XS-YL

**ELYSIAN**

POPELINE ELASTAM

POPLIN ELASTANE

130 gr/m<sup>2</sup>

60%CO 37%PES 3%EA

C/001 Nero/Black

C/101 Bianco/White

C/104 Blu Navy/Navy blue

C/107 Celeste/Sky blue

C/142 Sabbia/Sand

C/149 Verde cachi/Kaqui green

**Disponibili in tutti i colori  
per uomo e donna.**

*Available in all colours  
for man and woman.*

**700028**

PANTALONI CHINO DONNA

CHINO TROUSERS WOMAN

36-58

**700027**

PANTALONI CHINO UOMO

CHINO TROUSERS MAN

36-60

C/110 Beige

C/151 Cammello

C/104 Blu Navy/Navy blue

C/001 Nero/Black







**205400**

PANTALONE CHINO  
DONNA

*CHINO PANT WOMAN*

**SLIM FIT.**

36-58

Vita media | Senza pince  
Mid-waist

Without pleats

COLD 205 gr/m<sup>2</sup>

97%CO 3%EA

C/104 Blu Navy/Navy blue  
C/129 Osso/Bone





**240008**  
Cinzia

DONNA WOMAN

XS-YL

ELYSIAN

POPELINE ELASTAM

POPLIN ELASTANE

130 gr/m<sup>2</sup>

60%CO 37%PES 3%EA

C/001 Nero/Black

C/101 Bianco/White

C/104 Blu Navy/Navy blue

C/107 Celeste/Sky blue

C/142 Sabbia/Sand

C/149 Verde cachi/Kaqui green

**176500**

GONNA SKIRT

Senza tasche *Without pockets*

36-58

TRIVIAL 185 gr/m<sup>2</sup>

77%PES 20%VI 3%EA

C/104 Blu Navy/Navy blue

**240015**

Livia

DONNA WOMAN

XS-YL

**ELYSIAN**

POPELINE ELASTAM

POPLIN ELASTANE

130 gr/m<sup>2</sup>

60%CO 37%PES 3%EA

C/001 Nero/Black

C/101 Bianco/White

C/104 Blu Navy/Navy blue

C/107 Celeste/Sky blue

C/142 Sabbia/Sand

C/149 Verde cachi/Kaqui green

**700028**

PANTALONI CHINO DONNA

CHINO PANT WOMAN

36-58

TWILL 177 gr/m<sup>2</sup>

100%PES

C/104 Blu Navy/Navy blue

C/151 Cammello



**780300**

JEANS DONNA CASDY  
DENIM CASDY WOMAN

34-58

JEANS DENIM

280 gr/m<sup>2</sup>

97%CO 3%EA

C/841 Blu Jeans  
Denim Navy blue





**260021**  
Stefano

UOMO MAN  
XS-2YL

**ELYSIAN**  
POPELINE ELASTAM  
POPLIN ELASTANE  
130 gr/m<sup>2</sup>  
60%CO 37%PES 3%EA

C/101 Bianco/White

**700008**

PANTALONI UOMO  
TROUSERS MAN  
36-60

**SLIM FIT.**

Vita media | Senza pince  
Mid-waist | Without pleats

MEETING 240 gr/m<sup>2</sup>  
98%CO 2%EA

C/104 Blu Navy/Navy blue



# BREEZE

## LIBERTÀ IN OGNI FIBRA

### FREEDOM IN EVERY FIBER

BREEZE offre una combinazione unica di elasticità e comfort, fornendo una sensazione di leggerezza che ti accompagna in ogni movimento. Grazie alla tecnologia anti-peeling, mantiene la morbidezza e l'aspetto impeccabile lavaggio dopo lavaggio. La sua traspirabilità ti consente di godere di una freschezza continua, mentre la sua rapida asciugatura velocizza la tua routine quotidiana.

*BREEZE offers a unique combination of elasticity and comfort, providing a feeling of lightness that goes with its anti-peeling technology BREEZE maintains its softness and impeccable appearance wash after wash. Its breathability allows you to enjoy a continuous freshness, while its quick drying speeds up your daily routine.*



Anti-pilling



Elasticity



Comfort



Breathable



Fast Dry



Easy iron

**240005**

Micaela

XS-YL

**BREEZE**

TESSUTO WOVEN

120 gr/m<sup>2</sup>

98%PES 2%EA

C/110 Beige

C/101 Bianco/White

C/001 Nero/Black

C/107 Celeste/Sky blue

C/104 Blu Navy/Navy blue

**700006**

PANTALONI DONNA

TROUSERS WOMAN

36-58

TRIVIAL

185 gr/m<sup>2</sup>

70%PES 20%VI 3%EA

C/001 Nero/Black

C/104 Blu Navy/Navy blue







**240006**  
**Rosanna**

XS-YL  
**BREEZE**  
TESSUTO WOVEN  
120 gr/m<sup>2</sup>  
98%PES 2%EA

C/110 Beige  
C/101 Bianco/White  
C/001 Nero/Black  
C/107 Celeste/Sky blue  
C/104 Blu Navy/Navy blue



**150003**  
**GONNA SKIRT**  
Senza Tasche  
Without pockets  
185 gr/m<sup>2</sup>  
77%PES 20%VI 3%EA

C/001 Nero/Black  
C/104 Blu Navy/Navy blue



**240009**

**Flavia**

XS-YL

**BREEZE**

TESSUTO WOVEN

120 gr/m<sup>2</sup>

98%PES 2%EA

C/110 Beige

C/101 Bianco/White

C/001 Nero/Black

C/107 Celeste/Sky blue

C/104 Blù Navy/Navy blue



**202300**  
PANTALONI DONNA  
TROUSERS WOMAN  
SLIM FIT.

C/001 Nero/Black

**176500**  
GONNA  
SKIRT  
Senza Tasche  
Without pockets  
36-58  
TRIVIAL185 gr/m<sup>2</sup>  
77%PES 20%VI 3%EA

C/001 Nero/Black





**242900**  
Oriana

XS-YL  
RASO SATIN  
100 gr/m<sup>2</sup>  
94%PES 6%EA

C/101 Bianco/White

**243700**  
Telma

XS-YL  
SATÉN SATIN  
100 gr/m<sup>2</sup>  
94%PES 6%EA

C/101 Bianco/White

**243100**  
**Olivia**

XS-YL  
RASO SATIN  
100 gr/m<sup>2</sup>  
94%PES 6%EA

C/101 Bianco/White

**202300**

PANTALONI DONNA  
TROUSERS WOMAN  
SLIM FIT.

36-56

Vita media | Senza pince  
Mid-waist | Without pleats

TECNO 185 gr/m<sup>2</sup>  
96%PES 4%EA

C/001 Nero/Black



**241100**

DONNA WOMAN  
XS-YL  
CRÊPE ELASTAM  
CREPE ELASTANE  
220 gr/m<sup>2</sup>  
90%PES 10%EA

C/101 Bianco/White

# Happier Workplaces



# COOL D R Y

## Scopri l'eccellenza

nelle prestazioni con COOL DRY, un tessuto tecnico che offre una gestione dell'umidità superiore e una sensazione di freschezza costante.

## Discover excellence

*in performance with COOL DRY, a technical fabric that offers superior moisture management and a feeling of constant freshness.*



Anti-odour



Breathable



Elasticity



Comfort



Stretch



Easy iron

## Sperimenta la comodità

*Experience the comfort*





**240012**

**Giulia**

DONNA WOMAN  
XS-YL

**260019**

**Matteo**

UOMO MAN  
XS-2YL

**COOL DRY**

POPELINE ELASTAM

POPLIN ELASTANE

120 gr/m<sup>2</sup>

95%PES 5%EA

C/001 Nero/Black

C/101 Bianco/White

**Disponibili**

**in entrambi i colori  
per uomo e donna.**

*Available  
in both colours  
for man and woman.*

**206200**

**OJO DE PERDÍZ**

PANTALONI CHINO DONNA

CHINO TROUSERS WOMAN

36-58

**791700**

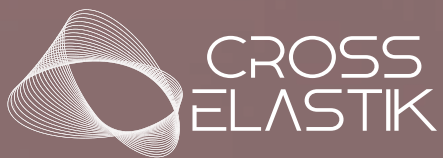
**OJO DE PERDÍZ**

PANTALONI CHINO UOMO

CHINO TROUSERS MAN

36-60

C/001 Nero/Black



Tessuto a maglia elastico e flessibile dalla struttura in trama molto compatta, soffice ed opaca, con aspetto identico su entrambi i lati.

Ha qualità idrorepellenti, che prevengono l'umidità e le perdite, rendendolo molto traspirante.

*Elastic and flexible knitted fabric with a very compact, flufy and opaque weft, with an identical appearance on both sides.*

*It has water-repellent qualities, so it prevents moisture and water seepage, which makes it highly breathable.*



Liquid-repellent



Breathable



Machine washable



360° Fit



Humidity control



Elasticity



**260001**

Luzón

UOMO MAN

COLLETO A CAMICIA

SHIRT COLLAR

XS-2YL

**210012**

Cerdeña

DONNA WOMAN

COLLETO A CAMICIA

SHIRT COLLAR

XS-YL

**CROSS ELASTIK**

PUNTO INTERLOCK

INTERLOCK KNIT

140 gr/m<sup>2</sup>

50%PES 50%RECYCLED

POLYESTER

C/001 Nero/Black

C/101 Bianco/White

**Disponibili**

**in entrambi i colori**

**per uomo e donna.**

*Available in both colours  
for man and woman.*

**791600**

PANTALONI CHINO

UOMO

CHINO TROUSERS MAN

36-60

**206100**

PANTALONI CHINO DONNA

CHINO TROUSERS WOMAN

36-58

C/156 Cenere/Ash



**260018**  
Pietro  
UOMO MAN  
COLLETO ALLA COREANA  
MANDARIN COLLAR  
XS-2YL

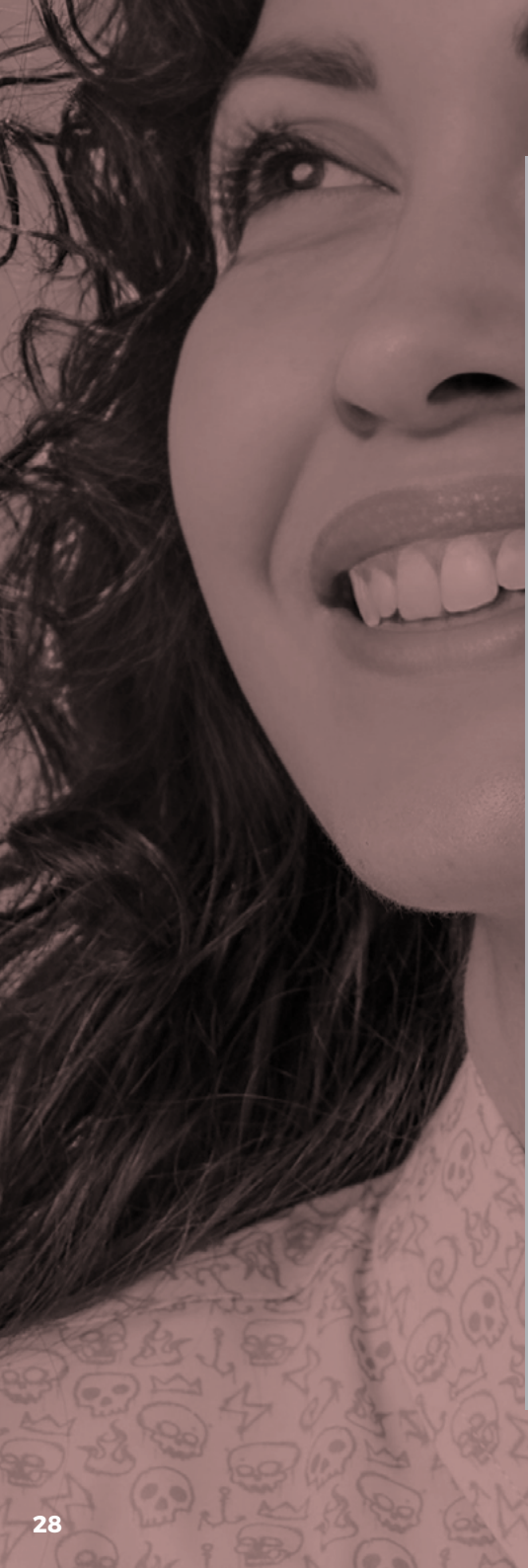
**240013**  
Renata  
DONNA WOMAN  
COLLETO ALLA COREANA  
MANDARIN COLLAR  
XS-YL

**CROSS ELASTIK**  
PUNTO INTERLOCK  
INTERLOCK KNIT  
140 gr/m<sup>2</sup>  
50%PES 50%RECYCLED  
POLYESTER

C/001 Nero/Black  
C/101 Bianco/White

**Disponibili  
in entrambi colori  
per uomo e donna.**

*Available  
in both colours  
for man and woman.*



**260031**  
Filippo

UOMO MAN  
SLIM FIT.  
XS-2YL

**240028**  
Giorgia

DONNA WOMAN  
XS-YL

POPELINE *POPLIN*  
115 gr/m<sup>2</sup>  
100%CO

C/1136 Teschi celeste  
Sky blue skulls

**780300**

JEANS DONNA CASDY  
DENIM CASDY WOMAN  
34-58

**780200**

JEANS UOMO CASDY  
DENIM CASDY MAN  
36-60

C/841 Blue jeans /Denim Navy blue



**260029**  
Giuseppe  
UOMO MAN  
SLIM FIT.  
XS-2YL

**240027**  
Ginevra  
DONNA WOMAN  
XS-YL

POPELINE POPLIN  
115 gr/m<sup>2</sup>  
100%CO

C/1138 Stampa cubi  
Cube print





**260028**  
Vito

UOMO MAN  
SLIM FIT.  
XS-2YL

**240026**  
Viola

DONNA WOMAN  
XS-YL

POPELINE *POPLIN*  
115 gr/m<sup>2</sup>  
100%CO

C/1137 Stampa bandiere  
Flag print

**700028**

PANTALONI CHINO DONNA T400  
*CHINO TROUSERS WOMAN*  
36-58

**700027**

PANTALONI CHINO UOMO T400  
*CHINO TROUSERS MAN*  
36-60

C/104 Blu Navy/Navy blue  
C/151 Cammello



**gary's**  
naturewear

**Per una moda più sostenibile.**

*For a more sustainable fashion.*

**La nostra linea NATUREWEAR utilizza tessuti sostenibili come i cotoni biologici e poliestere riciclato al 100%.**

*Our NATUREWEAR line uses sustainable fabrics such as organic cotton and 100% recycled polyester.*



**261100**

Eliseo

UOMO MAN

SLIM FIT.

XS-2YL

**243900**

Idara

DONNA WOMAN

XS-YL

POPELINE *POPLIN*

65% RECYCLED POLYESTER

35% COTTON

C/101 Bianco/White



RECYCLED  
POLYESTER



ORGANIC COTTON

**700028**

PANTALONI CHINO DONNA T400

CHINO TROUSERS WOMAN

36-58

**700027**

PANTALONI CHINO UOMO T400

CHINO TROUSERS MAN

36-60

C/151 Cammello



**260025**  
Fausto  
UOMO MAN  
SLIM FIT.  
XS-2YL

**240025**  
Caterina  
DONNA WOMAN  
XS-YL

POPELINE *POPLIN*  
105 gr/m<sup>2</sup>  
50%CO 50%PES

C/295 Quadri blu navy  
C/296 Quadri rosso



**780300**

JEANS DONNA CASDY  
DENIM CASDY WOMAN  
34-58

**780200**

JEANS UOMO CASDY  
DENIM CASDY MAN  
36-60

C/841 Blu jeans/Denim navy blue

**299300**

Leone

UOMO MAN

SLIM FIT.

XS-2YL

**243400**

Greta

DONNA WOMAN

XS-YL

PEPELINE POPLIN

120 gr/m<sup>2</sup>

65%PES 35%CO

C/1122 Amebe grigio marengo  
Amebas dark grey

**780300**

JEANS DONNA CASDY

DENIM CASDY WOMAN

34-58

**780200**

JEANS UOMO CASDY

DENIM CASDY MAN

36-60

C/842 Nero jeans/Denim black



***Eleganza funzionale per  
il mondo lavorativo***

*Functional Elegance for  
the Workplace*



**260026**

Nino

UOMO MAN

SLIM FIT.

XS-2YL

**240016**

Sabrina

DONNA WOMAN

XS-YL

POPELINE ELASTAM

POPLIN ELASTANE

120 gr/m<sup>2</sup>

97%CO 3%EA

C/1134 Blu navy puntini

Navy blue with dots

**791500**

PANTALONI CHINO UOMO

CHINO TROUSERS MAN

36-60

**205400**

PANTALONI CHINO DONNA

CHINO TROUSERS WOMAN

36-58

C/104 Blu navy/Navy



**260027**  
Oracio  
UOMO MAN  
SLIM FIT.  
XS-2YL

**240024**  
Teresa

DONNA WOMAN  
XS-YL

POPELINE ELASTAM  
POPLIN ELASTANE  
120 gr/m<sup>2</sup>  
97%CO 3%EA

C/1135 Blu navy puntivi bicolore  
Navy dots bicolor

**700028**

PANTALONI CHINO DONNA  
CHINO TROUSERS WOMAN  
36-58

**700027**

PANTALONI CHINO UOMO  
CHINO TROUSERS MAN  
36-60

C/110 Beige







**240011**  
Fabiola  
DONNA WOMAN  
XS-YL

**260013**  
Leonardo  
UOMO MAN  
SLIM FIT.  
XS-2YL

POPELINE ELASTAM  
POPLIN ELASTANE  
110 gr/m<sup>2</sup>  
61%CO 36%NY 3%EA

C/104 Blu navy/Navy blue  
C/112 Burdeaux/Burgundy



**791600**  
PANTALONI CHINO UOMO  
CHINO TROUSERS MAN  
SIZES 36-60  
SLIM FIT.  
Senza pince *Without pleats*  
Twill MELANGE  
MOTTLED TWILL  
175 gr/m<sup>2</sup>  
55%CO 42%PES 3%EA

C/104 Blu navy/Navy blue

**700008**  
PANTALONI UOMO  
TROUSERS MAN  
36-60  
SLIM FIT.  
Vita media | Senza pince  
*Mid-waist | Without pleats*  
MEETING 240 gr/m<sup>2</sup>  
98%CO 2%EA

C/109 Grigio/Grey



**260800**  
Mattia  
UOMO MAN  
SLIM FIT.  
XS-2YL



**240100**  
Valeria  
DONNA WOMAN  
XS-YL

POPELINE JEANS STINTO  
STONEWASHED DENIM  
POPLIN  
124 gr/m<sup>2</sup>  
100%CO

C/806 Jeans stinto  
Stonewashed denim

**242300**  
Julieta  
DONNA WOMAN  
XS-YL

**298200**  
Romeo  
UOMO MAN  
SLIM FIT.  
XS-2YL

POPELINE JEANS STINTO  
STONEWASHED DENIM POPLIN  
124 gr/m<sup>2</sup>  
100%CO

C/829 Jeans blu stinto  
Stonewashed indigo denim

**780300**  
JEANS DONNA CASDY  
DENIM CASDY WOMAN  
34-58

**780200**  
JEANS UOMO CASDY  
DENIM CASDY MAN  
36-60

JEANS DENIM  
280 gr/m<sup>2</sup>  
97%CO 3%EA

C/841 Blu jeans/Denim navy blue





**700028**

PANTALONI CHINO DONNA T400  
CHINO TROUSERS WOMAN  
36-58

C/151 Cammello

**700027**

PANTALONI CHINO UOMO T400  
CHINO TROUSERS MAN  
36-60

C/104 Blu navy/Navy blue

**260015**  
Marcello  
UOMO MAN  
SLIM FIT.  
XS-2YL

**240022**  
Angelica  
DONNA WOMAN  
XS-YL

FIL A FIL ELASTAM  
FIL A FIL ELASTANE  
110 gr/m<sup>2</sup>  
62%PES 34%CO 4%EA

C/101 Bianco/White  
C/107 Celeste/Sky blue

**Disponibili  
in entrambi i colori  
per uomo e donna.**

*Available  
in both colours  
for man and woman.*



**260012**  
Ricardo  
UOMO MAN  
SLIM FIT.  
XS-2YL

**240023**  
Serena  
DONNA WOMAN  
XS-YL

FIL A FIL ELASTAM  
FIL A FIL ELASTANE  
110 gr/m<sup>2</sup>  
62%PES 34%CO 4%EA

C/101 Branco/White  
C/107 Celeste/Sky blue

**Disponibili  
in entrambi i colori  
per uomo e donna.**

*Available  
in both colours  
for man and woman.*



# AIR DRY

TUTTO CIÒ CHE SERVE

EVERYTHING YOU NEED



Anti-odour



Antimicrobial



Elasticity



Breathable



Easy iron



Fast dry



Recycle fabric

**240017**  
Nicoletta  
DONNA WOMAN  
XS-YL

**260016**  
Salvatore  
UOMO MAN  
XS-2YL

**AIR DRY**  
PUNTO PIQUÉ PIQUE KNIT  
180 gr/m<sup>2</sup>  
50%PES 50% PES RECYCLED

C/001 Nero/Black  
C/101 Bianco/White  
C/104 Blu navy/Navy blue



**700028**  
PANTALONI CHINO DONNA T400  
CHINO TROUSERS WOMAN  
36-58

**700027**  
PANTALONI CHINO UOMO T400  
CHINO TROUSERS MAN  
36-60

C/104 Blu navy/Navy blue  
C/142 Sabbia/Sand  
C/151 Cammello

**260032**  
Augusto  
UOMO MAN  
SLIM FIT.  
XS-2YL

**240029**  
Alice  
DONNA WOMAN  
XS-YL

TWILL SPIGA  
HERRINGBONE TWILL  
130 gr/m<sup>2</sup>  
60%CO 40%PES

C/297 Quadri celeste-marino  
Checked sky-blue marine  
C/298 Quadri marrone-marino  
Checked brown-marine  
C/299 Quadri verde cachi  
Checked khaki green

**Disponibili in  
tutti i colori  
per uomo e donna.**

*Available  
in all colours  
for man and woman.*

**780300**  
JEANS DONNA CASDY  
DENIM CASDY WOMAN  
34-58

**780200**  
JEANS UOMO CASDY  
DENIM CASDY MAN  
36-60

C/841 Blu jeans/Denim navy blue







# ***Camicie***

***che definiscono il tuo stile lavorativo***

***Shirts that define your work style***



**600054**

Acirón

MANICHE CORTE

SHORT SLEEVE

UNISEX

XS-2YL

**260014**

Michele

MANICHE LUNGHE

LONG SLEEVE

UNISEX

XS-2YL

TWILL ELASTAM

TWILL STRETCH

206 gr/m<sup>2</sup>

59%CO 39%PES 2%EA

C/001 Nero/Black

C/149 Verde cachi/Khaki green

C/151 Cammello

**780300**

JEANS DONNA CASDY

DENIM CASDY WOMAN

34-58

**780200**

JEANS UOMO CASDY

DENIM CASDY MAN

36-60

JEANS DENIM

280 gr/m<sup>2</sup>

97%CO 3%EA

C/839 Nero jeans/Denim black

C/841 Blu jeans/Denim navy blue





**260023**  
Giacomo  
UOMO MAN  
SLIM FIT.  
XS-2YL

**240021**  
Grazia  
DONNA WOMAN  
XS-YL

TWILL  
140 gr/m<sup>2</sup>  
50%PES 50%CO

C/907 Écru

**700008**  
PANTALONI CHINO UOMO  
CHINO TROUSERS MAN  
MEETING  
36-60

**700012**  
PANTALONI CHINO DONNA  
CHINO TROUSERS WOMAN  
MEETING  
36-58

C/124 Marrone/Brown





**651400**

DONNA WOMAN

XS-YL

TESSUTO WOVEN

120 gr/m<sup>2</sup>

86%PES 14%EA

C/001 Nero/Black

C/101 Bianco/White

C/1010 Bianco ottico/Optical white

**700006**

PANTALONI DONNA

TROUSERS WOMAN

TRIVIAL

36-58

C/001 Nero/Black

**176600**

GONNA SKIRT

Senza tasche Without pockets

36-58

CONFORT 203 gr/m<sup>2</sup>

54%PES 44%WO 2%EA

C/001 Nero/Black

C/104 Blu navy/Navy blue

C/1010

**780500**

BERMUDA DONNA  
JEANS CASDY  
SHORT DENIM  
CASDY WOMAN  
34-58

**780400**

BERMUDA UOMO  
JEANS CASDY  
SHORT DENIM  
CASDY MAN  
36-60

JEANS DENIM  
280 gr/m<sup>2</sup>  
97%PES 3%EA

C/841 Casdy blu navy  
Casdy navy blue

C/1126

**210002**

Hawai

UOMO MAN  
XS-2YL

**210008**

Hawaiana

DONNA WOMAN  
XS-YL

TESSUTO WOVEN

80 gr/m<sup>2</sup>  
100%VI

C/1126 Tucano  
C/1132 Cocco  
C/1127 Paradiso  
C/1129 Royal  
C/1128 Ibisco  
C/1133 Palma





C/1132

**780300**

JEANS DONNA CASDY  
DENIM CASDY WOMAN  
34-58

**780200**

JEANS UOMO CASDY  
DENIM CASDY MAN  
36-60

C/839 Nero jeans/Denim black



C/1127



C/1129

**700033**

PANTALONI DONNA  
TROUSERS WOMAN  
SIZES XS-YL

**700032**

PANTALONI UOMO  
TROUSERS MAN  
36-54

BAMBULA  
160 gr/m<sup>2</sup>  
100%PES

C/154 Verde muschio/Moss green  
C/110 Beige



C/1128

**780300**  
JEANS DONNA CASDY  
DENIM CASDY WOMAN  
34-58

**780200**  
JEANS UOMO CASDY  
DENIM CASDY MAN  
36-60

JEANS *DENIM*  
280 gr/m<sup>2</sup>  
97%CO 3%EA

C/834 Verde jeans/Denim green

6.

C/1133

**700029**  
BERMUDA UOMO  
SHORT MAN  
36-60

**700031**  
BERMUDA DONNA  
SHORT WOMAN  
XS-YL

TESSUTO WOVEN  
158 gr/m<sup>2</sup>  
100%PES

C/108 Verde/Green



**700023**  
BERMUDA DONNA FIOCCO  
SHORT TIE-FRONT WOMAN  
36-58

**700022**  
BERMUDA UOMO  
SHORT MAN  
36-60

LINO COTONE  
210 gr/m<sup>2</sup>  
89%PES 7%VI 4%EA

C/110 Beige

**210007**

Tiwi

UOMO MAN

XS-2YL

**210006**

Kaula

DONNA WOMAN

XS-YL

LINO COTONE

122 gr/m<sup>2</sup>

55%LI 45%CO

C/101 Bianco/White

C/154 Verde muschio/Moss green

C/104 Blu navy/Navy blue

C/110 Beige

**Disponibili  
in tutti i colori  
per uomo e donna.**

*Available  
in all colours  
for man and woman.*



**210005**  
Salomón  
UOMO MAN  
GUAYABERA  
COLLETO A CAMICIA  
SHIRT COLLAR  
XS-2YL

**210014**  
Sumatra  
DONNA WOMAN  
GUAYABERA  
COLLETO A CAMICIA  
SHIRT COLLAR  
XS-YL

LINO COTTON  
LINEN COTTON  
122 gr/m<sup>2</sup>  
55%LI 45%CO

C/110 Beige  
C/101 Bianco/White

**Disponibili  
in entrambi i colori  
per uomo e donna.**

*Available  
in both colours  
for man and woman.*

**700028**  
PANTALONI CHINO DONNA  
CHINO TROUSERS WOMAN  
36-58

**700027**  
PANTALONI CHINO UOMO  
CHINO TROUSERS MAN  
36-60

C/142 Sabbia/Sand  
C/151 Cammello

**210013**  
Isabela  
DONNA WOMAN  
GUAYABERA  
COLLETO ALLA COREANA  
MANDARIN COLLAR  
XS-YL

**210003**  
Borneo  
UOMO MAN  
GUAYABERA  
COLLETO ALLA COREANA  
MANDARIN COLLAR  
XS-2YL

LINO COTONE  
LINEN COTTON  
122 gr/m<sup>2</sup>  
55%LI 45%CO

C/110 Beige  
C/101 Bianco/White

**Disponibili  
in entrambi i colori  
per uomo e donna.**

*Available  
in both colours  
for man and woman.*









**298900**

**Dante**

UOMO MAN

**SLIM FIT.**

XS-2YL

**243600**

**Flora**

DONNA WOMAN

XS-YL

FALSO LINO

*FAKE LINEN*

110 gr/m<sup>2</sup>

50%PES 50%CO

C/101 Bianco/White

**780300**

JEANS DONNA

CASDY

DENIM CASDY WOMAN

SIZES 34-58

**780200**

JEANS UOMO

CASDY

DENIM CASDY MAN

36-60

JEANS *DENIM*

280 gr/m<sup>2</sup>

97%CO 3%EA

C/841 Blu jeans/Denim navy blue

A woman with long, wavy hair is shown from the waist up, wearing a white, long-sleeved uniform with a buttoned placket and rolled-up sleeves. She is looking slightly to her right with a gentle smile. The background is a solid, muted brown color.

***La tua uniforme,  
Il tuo biglietto da visita***

*Your uniform, your introduction*

**210009**

**Nias**

UOMO MAN  
XS-2YL

**210011**

**Lanay**

DONNA WOMAN  
XS-YL

CHAMBRAY

146 gr/m<sup>2</sup>

80%CO 20%PES

C/110 Beige

C/101 Bianco/White

**Disponibili  
in entrambi i colori  
per uomo e donna.**

*Available  
in both colours  
for man and woman.*

**780300**

JEANS DONNA CASDY  
DENIM CASDY WOMAN  
34-58

**780200**

JEANS UOMO CASDY  
DENIM CASDY MAN  
36-60

C/841 Blu jeans/Denim navy blue





**260022**  
**Fabio**  
UOMO MAN  
SLIM FIT.  
XS-2YL

**240014**  
**Daniela**  
DONNA WOMAN  
XS-YL

CHAMBRAY  
128 gr/m<sup>2</sup>  
100%CO

C/104 Blu navy/Navy blue

**700028**  
PANTALONI CHINO DONNA  
CHINO TROUSERS WOMAN  
36-58

**700027**  
PANTALONI CHINO UOMO  
CHINO TROUSERS MAN  
36-60

T400  
Twill 177 gr/m<sup>2</sup>  
100%PES

C/110 Beige

**260024**  
Davide

UOMO MAN  
SLIM FIT.  
XS-2YL  
CHAMBRAY  
128 gr/m<sup>2</sup>  
100%CO

C/104 Blu navy/Navy blue



**700055**

BERMUDA CHINO UOMO  
CHINO SHORT MAN  
36-60  
T400  
Twill 177 gr/m<sup>2</sup>  
100%PES

C/110 Beige



# Punto. *Knit.*









**120004**

**GILET**

UOMO MAN

XS-2YL

Calibro 10 a 2 hilos 3/50

10 Gauge 2 threads 3/50

**120001**

**GILET**

DONNA WOMAN

XS-YL

Calibro 10 a 1 hilo 3/50

10 Gauge 1 thread 3/50

50% ORGANIC COTTON

47% RECYCLED POLYESTER

3% OTHER FIBERS

C/110 Beige

C/104 Blu navy/Navy blue

C/001 Nero/Black



**gary's**  
naturewear



**700028**

PANTALONI CHINO DONNA  
CHINO TROUSERS WOMAN

36-58

**700027**

PANTALONI CHINO UOMO  
CHINO TROUSERS MAN

36-60

T400

TWILL 177 gr/m<sup>2</sup>

100%PES

C/110 Beige

C/151 Cammello



**120003**

**CARDIGAN**

UOMO MAN

XS-2YL

Calibro 10 a 2 hilos 3/50

10 Gauge 2 threads 3/50

**120002**

**CARDIGAN**

DONNA WOMAN

XS-YL

Calibro 10 a 1 hilo 3/50

10 Gauge 1 thread 3/50

50% ORGANIC COTTON

47% RECYCLED POLYESTER

3% OTHER FIBERS

C/104 Blu navy/Navy blue

C/001 Nero/Black

C/110 Beige



**gary's**  
naturewear

**700028**

PANTALONI CHINO DONNA

CHINO TROUSERS WOMAN

36-58

**700027**

PANTALONI CHINO UOMO

CHINO TROUSERS MAN

36-60

C/104 Blu navy/Blue navy

C/110 Beige



**103100**  
DONNA WOMAN  
S-XXL

**103200**  
UOMO MAN  
XS-XL

Calibro 10 a 2 fili 2/42  
10 Gauge 2 threads  
70% ACRÍLICO DRALÓN  
30% LANA MERINO

C/001 Nero/Black  
C/104 Blu navy/Navy blue



**102900**

DONNA WOMAN  
S-XXL

**102800**

UOMO MAN  
XS-XL

Calibro 8 a 2 fili 2/22  
8 Gauge 2 threads  
100% ACRÍLICO

C/001 Nero/Black  
C/104 Blu navy/Navy blue

**791100**

PANTALONI UOMO  
TROUSERS MAN

Senza pince *Without pleats*  
36-60

**205100**

PANTALONI DONNA  
TROUSERS WOMAN

Vita media | Senza pince  
*Mid waist | Without pleats*  
36-58

**TRIVIAL**

185 gr/m<sup>2</sup>  
77%PES 20%VI

C/001 Nero/Black  
C/104 Blu navy/Navy blue



## 103300

DONNA WOMAN

S-XXL

Calibro 12 a 1 filo 2/28

12 Gauge 1 thread

70% ACRÍLICO DRALÓN

30%POLIAMMIDE

C/001 Nero/Black

C/104 Blu navy/Navy blue

## 205100

PANTALONI DONNA

TROUSERS WOMAN

Vita media | Senza pince

Mid waist | Without pleats

36-58

TRIVIAL

185 gr/m<sup>2</sup>

77%PES 20%VI 3%EA

C/104 Blu navy/Navy blue

C/001 Nero/Black





**102600**  
UOMO MAN  
XS-XL

**102500**  
DONNA WOMAN  
S-XXL

Calibro 10 a 2 fili 2/42  
10 Gauge 2 threads  
70% ACRÍLICO DRALÓN  
30% LANA MERINO

C/001 Nero/Black  
C/104 Blu navy/Navy blue  
C/139 Grigio marengo/Dark grey

**Disponibili  
in tutti i colori  
per uomo e donna.**

*Available  
in all colours  
for man and woman.*



**102200**  
UOMO MAN  
XS-XL

**102100**  
DONNA WOMAN  
S-XXL

Calibro 10 a 2 fili 2/42  
10 Gauge 2 threads  
70% ACRÍLICO DRALÓN  
30% LANA MERINO

C/104 Blu navy/Navy blue  
C/001 Nero/Black  
C/109 Grigio marengo/Dark grey

**Disponibili  
in tutti i colori  
per uomo e donna.**

*Available  
in all colours  
for man and woman.*

**791100**  
PANTALONI UOMO  
TROUSERS MAN  
*Senza pince Without pleats*  
36-60

**205100**  
PANTALONI DONNA  
TROUSERS WOMAN  
*Vita media | Senza pince*  
*Mid waist | Without pleats*  
36-58

**TRIVIAL**  
185 gr/m<sup>2</sup>  
77%PES 20%VI 3%EA

C/129 Grigio marengo/Dark grey  
C/001 Nero/Black  
C/104 Blu navy/Navy blue



**100800**

UNISEX  
XS-XL

Calibro 10 a 2 fili 2/42  
10 Gauge 2 threads  
100% ACRÍLICO

C/104 Blu navy/Navy blue  
C/112 Burdeaux/Burgundy



**102300**

UOMO MAN  
XS-XL

**102400**

DONNA WOMAN  
S-XXL

Calibro 10 a 2 fili 2/42  
10 Gauge 2 threads  
70% ACRÍLICO DRALÓN  
30% LANA MERINO

C/001 Nero/Black  
C/104 Blu navy/Navy blue  
C/109 Grigio marengo/Dark grey

**Disponibili  
in tutti i colori  
per uomo e donna.**

*Available in all colours  
for man and woman.*

**791100**

PANTALONI UOMO  
TROUSER MAN  
Senza pince Without pleats  
36-60

**205100**

PANTALONI DONNA  
TROUSERS WOMAN  
Vita media | Senza pince  
Mid waist | Without pleats  
36-58

**TRIVIAL**

185 gr/m<sup>2</sup>  
77%PES 20%VI 3%EA

C/001 Nero/Black  
C/129 Grigio marengo/Dark grey

**100900**

UNISEX

XS-XL

Calibro 10 a 2 fili 2/42

10 Gauge 2 threads

100% ACRÍLICO

C/001 Nero/Black

C/112 Burdeaux/Burgundy





**120005**

DONNA WOMAN

XS-YL

Calibro 10 a 2 fili 2/42

10 Gauge 2 threads

100% ACRÍLICO DRALÓN

C/104 Blu navy/Navy blue

**205100**

PANTALONI DONNA

TROUSERS WOMAN

TRIVIAL

36-58

C/104 Blu navy/Navy blue

**gary's**  
RED LINE



# gary's

RED LINE

Con la nostra linea Low Cost offriamo prodotti basic e funzionali ma della stessa qualità rispetto al tradizionale prodotto equivalente.

Design e comodità al miglior prezzo: perché capiamo l'importanza della funzionalità e l'economia nel mondo lavorativo.

*With our Low Cost line we offer basic and functional products but with the same quality as the equivalent traditional product.*

*Design and comfort at the best price; because we understand the importance of functionality and economy in the worlds of work.*





**295200**

UOMO MAN  
SLIM FIT.  
XS-2YL

**288400**

DONNA WOMAN  
XS-YL

OXFORD

140 gr/m<sup>2</sup>

70%CO 30%PES

C/103 Bluastro/Blueish  
C/107 Celeste/Sky blue  
C/101 Bianco/White

**Disponibili  
in tutti i colori  
per uomo e donna.**

*Available  
in all colours  
for man and woman.*

**791100**

PANTALONI UOMO  
TROUSERS MAN  
TRIVIAL  
36-60

**205100**

PANTALONI DONNA  
TROUSERS WOMAN  
TRIVIAL  
36-58

C/001 Nero/Black  
C/104 Blu navy/Navy blue





**295000**  
UOMO MAN  
XS-2YL

**288100**  
DONNA WOMAN  
XS-YL

**COLLETO A CAMICIA**  
**SHIRT COLLAR**  
POPELINE POPLIN  
120 gr/m<sup>2</sup>  
65%PES 35%CO

C/101 Bianco/White  
C/001 Nero/Black

**791100**  
PANTALONI UOMO  
TROUSERS MAN  
Senza pince *Without pleats*  
36-60

**205100**  
PANTALONI DONNA  
TROUSERS WOMAN  
Vita media | Senza pince  
*Mid waist | Without pleats*  
36-58

**TRIVIAL**  
185 gr/m<sup>2</sup>  
77%PES 20%VI 3%EA

C/001 Nero/Black



**296000**  
UOMO MAN  
XS-2YL

**288200**  
DONNA WOMAN  
XS-YL

**COLLETO ALLA COREANA**  
**MANDARIN COLLAR**  
POPELINE POPLIN  
120 gr/m<sup>2</sup>  
65%PES 35%CO

C/101 Bianco/White  
C/001 Nero/Black

**Disponibili in  
entrambi i colori  
per uomo e donna.**

*Available  
in both colours  
for man and woman.*



**296100**  
UOMO MAN  
XS-2YL

**288300**  
DONNA WOMAN  
XS-YL

**COLLETO ALLA COREANA**  
**MANDARIN COLLAR**  
POPELINE POPLIN  
120 gr/m<sup>2</sup>  
65%PES 35%CO

C/001 Nero/Black  
C/101 Bianco/White

**791100**  
PANTALONI UOMO  
TROUSERS MAN  
Senza pince *Without pleats*  
36-60

**205100**  
PANTALONI DONNA  
TROUSERS WOMAN  
Vita media | Senza pince  
*Mid waist | Without pleats*  
36-58

**TRIVIAL**  
185 gr/m<sup>2</sup>  
77%PES 20%VI 3%EA

C/001 Nero/Black



**295100**  
UOMO MAN  
XS-2YL

**288000**  
DONNA WOMAN  
XS-YL

**COLLETO A CAMICIA**  
**SHIRT COLLAR**  
POPELINE POPLIN  
120 gr/m<sup>2</sup>  
65%PES 35%CO

C/001 Nero/Black  
C/101 Bianco/White

**Disponibili**  
**in entrambi i colori**  
**per uomo e donna.**

*Available*  
*in both colours*  
*for man and woman.*

# SERENE

*SERENE unisce la facilità di stiratura con una elasticità incomparabile, offrendoti comodità a ogni utilizzo.*

*SERENE combines an ease of ironing with an incomparable elasticity, giving you comfort in every use.*



Elasticity



Easy iron



Comfort

**260005**  
UOMO MAN  
XS-2YL

**240002**  
DONNA WOMAN  
XS-YL

**COLLETO A CAMICIA**  
**SHIRT COLLAR**  
**SERENE**  
POPELINE ELASTAM  
POPLIN ELASTANE  
125 gr/m<sup>2</sup>  
65%PES 32%CO 3%EA

C/001 Nero/Black  
C/101 Bianco/White

**Disponibili**  
**in entrambi i colori**  
**per uomo e donna.**

*Available*  
*in both colours*  
*for man and woman.*

**791100**  
PANTALONI UOMO  
TROUSERS MAN  
TRIVIAL  
36-60

**205100**  
PANTALONI DONNA  
TROUSERS WOMAN  
TRIVIAL  
36-58

C/101 Nero/Black



**260004**  
UOMO MAN  
XS-2YL

**240001**  
DONNA WOMAN  
XS-YL

**COLLETO ALLA COREANA**  
**MANDARIN COLLAR**

**SERENE**  
POPELINE ELASTAM  
POPLIN ELASTANE  
125 gr/m<sup>2</sup>  
65%PES 32%CO 3%EA

C/001 Nero/Black  
C/101 Bianco/White  
C/107 Celeste/Sky blue

**Disponibili**  
**in tutti i colori**  
**per uomo e donna.**

*Available*  
*in all colours*  
*for man and woman.*





**260006**

UOMO MAN  
XS-2YL

**240003**

DONNA WOMAN  
XS-YL

**COLLETO A CAMICIA**  
**SHIRT COLLAR**  
**SERENE**

POPELINE ELASTAM  
POPLIN ELASTANE  
125 gr/m<sup>2</sup>  
65%PES 32%CO 3%EA

C/001 Nero/Black  
C/101 Bianco/White

**791100**

PANTALONI UOMO  
TROUSERS MAN  
*Senza pince Without pleats*  
36-60

**205100**

PANTALONI DONNA  
TROUSERS WOMAN  
*Vita media | Senza pince*  
*Mid waist | Without pleats*  
36-58

**TRIVIAL**

185 gr/m<sup>2</sup>  
77%PES 20%VI 3%EA

C/001 Nero/Black





**260007**  
UOMO MAN  
XS-2YL

**240004**  
DONNA WOMAN  
XS-YL

**COLLETO ALLA COREANA**  
**MANDARIN COLLAR**  
**SERENE**  
POPELINE ELASTAM  
POPLIN ELASTANE  
125 gr/m<sup>2</sup>  
65%PES 32%CO 3%EA

C/001 Nero/Black  
C/101 Bianco/White

**260017**

**UNISEX**

XS-2YL

**SERENE**

POPELINE ELASTAM

POPLIN ELASTANE

125 gr/m<sup>2</sup>

65%PES 32%CO 3%EA

C/101 Branco/White

C/107 Celeste/Sky blue



**260008**

UNISEX

XS-2YL

SERENE

POPELINE ELASTAM

POPLIN ELASTANE

125 gr/m<sup>2</sup>

65%PES 32%CO 3%EA

C/101 Bianco/White

C/107 Celeste/Sky blue



**791100**

PANTALONI UOMO

TROUSERS MAN

Senza pince *Without pleats*

36-60

TRIVIAL

185 gr/m<sup>2</sup>

77%PES 20%VI 3%EA

C/104 Blu Navy/Navy blue



# HIDRÓFUGO

Stain-resistant

PROTETTORE PER TESSUTI  
TEXTILE PROTECTOR

312200  
SPRAY IDROREPELENTE  
WATER REPELLENT SPRAY

## PROTEGGI LA TUA UNIFORME

- *Applica lo spray in modo uniforme della superficie che vuoi proteggere.*
- *Lascia che il prodotto si asciughi completamente, ci vorranno un massimo di 8 ore.*
- *Una volta asciutto, il risultato sarà uno strato protettivo idrorepellente, che manterrò i tuoi capi e tessuti protetti da rovesciamenti d'acqua e macchie di liquido.*

## PROTECT YOUR UNIFORM

- *Apply the spray evenly on the textile surface you want to protect.*
- *Allow the product to dry completely, which may take up to 8 hours.*
- *Once dry, the result will be a protective layer that repels liquids, keeping your clothing and fabrics protected from spills and liquid stains.*



Antimicrobial



Liquid-repellent



Reusable



Stain-resistant



Machine washable



Invisible



Breathable



Anti-odour

PREVIENE LA CRESCITA MICROBICA | RENDE PIÙ FACILE LA PULIZIA ALLUNGANDO  
LA VITA UTILE DEL TESSUTO | DERMATOLOGICAMENTE TESTATO

PREVENTS MICROBIAL GROWTH | FACILITATES CLEANING  
EXTENDS THE LIFETIME OF THE FABRIC | DERMATOLOGICAL TESTED



PRO  
TEXGO  
PROTECTOR TEXTIL

# TABELLA DELLE MISURE

## MEASUREMENTS

QUESTE MISURE SONO STATE PRESE PER ASSEGNARE AD OGNI PERSONA LA TAGLIA ADEGUATA.  
 THESE MEASURES ARE TAKEN TO PROVIDE EACH PERSON WITH THE APPROPRIATE SIZE.



CM.

MISURE STANDARD DONNA

STANDARD WOMAN SIZES

TAGLIE	SIZES	XSS	XS	S	M	L	XL	XXL	YL
		34	36	38	40	42	44	46	48
PETTO	BUST	71-77	78-84	85-91	92-98	99-105	106-112	113-119	120-126
VITA	WAIST	68	72	76	80	84	88	92	96
FIANCHI	HIPS	92	96	100	104	108	112	116	120



CM.

MISURE STANDARD UOMO

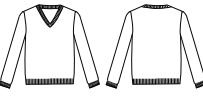

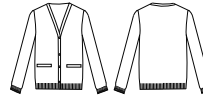
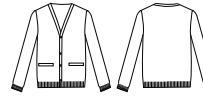
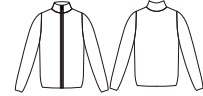
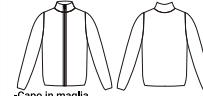
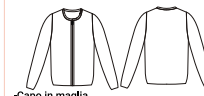

STANDARD MAN SIZES


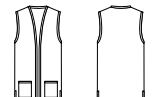


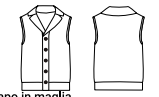
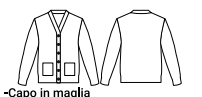


TAGLIE	SIZES	XS	S	M	L	XL	XXL	YL	2YL
		36	38	40	42	44	46	48	50
COLLO	NECK	36	38	40	42	44	46	48	50
PETTO	BUST	83-89	90-96	97-103	104-110	111-117	118-124	125-131	132-138
VITA	WAIST	76	80	84	88	92	96	100	104
FIANCHI	HIPS	92	96	100	104	108	112	116	120

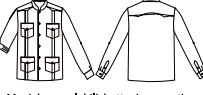







# BOZZETTI E CARATTERISTICHE DEI CAPI


## SKETCHES AND CHARACTERISTICS OF THE GARMENTS

<p><b>100800 P83</b></p>  <ul style="list-style-type: none"> <li>-Capo in maglia smanicato</li> <li>-Tessuto a costine su colletto e bordo inferiore</li> <li>-Lunghezza approx:70cm</li> <li>H2 SEMI-ADERENTE</li> <li>- Sleeveless knit garment</li> <li>- Ribbed neck and hem</li> <li>- Approximate length: 70cm</li> <li>- H2/M2 SEMI-FITTED</li> </ul>	<p><b>100900 P85</b></p>  <ul style="list-style-type: none"> <li>-Capo in maglia</li> <li>-Tessuto a costine su colletto, polsini e bordo inferiore</li> <li>-Lunghezza approx:63cm</li> <li>H2 SEMI-ADERENTE</li> <li>- Knit garment</li> <li>- Ribbed neck, armhole, and hem</li> <li>- Approximate length: 63cm</li> <li>- H2/M2 SEMI-FITTED</li> </ul>	<p><b>102100 P82</b></p>  <ul style="list-style-type: none"> <li>-Capo in maglia smanicato</li> <li>-Tessuto a costine su colletto e bordo inferiore</li> <li>-Lunghezza approx:66cm</li> <li>H2 SEMI-ADERENTE</li> <li>- Sleeveless knit garment</li> <li>- Ribbed neck and hem</li> <li>- Approximate length: 66cm</li> <li>- M2 SEMI-FITTED</li> </ul>	<p><b>102200 P82</b></p>  <ul style="list-style-type: none"> <li>-Capo in maglia smanicato</li> <li>-Tessuto a costine su colletto e bordo inferiore</li> <li>-Lunghezza approx:70cm</li> <li>H2 SEMI-ADERENTE</li> <li>- Sleeveless knit garment</li> <li>- Ribbed neck and hem</li> <li>- Approximate length: 70cm</li> <li>- H2 SEMI-FITTED</li> </ul>
---	---	--	--

<p><b>102300 P84</b></p>  <ul style="list-style-type: none"> <li>-Capo in maglia</li> <li>-Tessuto a costine su polsini, scollo e bordo inferiore</li> <li>-Lunghezza approx:70cm</li> <li>H2 SEMI-ADERENTE</li> <li>- Knit garment</li> <li>- Ribbed cuffs, neckline, and hem</li> <li>- Approximate length: 70cm</li> <li>- H2 SEMI-FITTED</li> </ul>	<p><b>102400 P84</b></p>  <ul style="list-style-type: none"> <li>-Capo in maglia</li> <li>-Tessuto a costine su polsini, scollo e bordo inferiore</li> <li>-Lunghezza approx:66cm</li> <li>H2 SEMI-ADERENTE</li> <li>- Knit garment</li> <li>- Ribbed cuffs, neckline, and hem</li> <li>- Approximate length: 66cm</li> <li>- M2 SEMI-FITTED</li> </ul>	<p><b>102500 P81</b></p>  <ul style="list-style-type: none"> <li>-Capo in maglia</li> <li>-Bottoni sul davanti</li> <li>-Tessuto a costine su polsini, scollo e bordo inferiore</li> <li>-2 taschi frontali</li> <li>-Lunghezza approx:66cm</li> <li>M3 LARGA</li> <li>- Knit garment</li> <li>- Buttons on the front</li> <li>- Ribbed armhole and hem</li> <li>- 2 front pockets</li> <li>- Approximate length: 66cm   M3 LOOSE FIT</li> </ul>	<p><b>102600 P81</b></p>  <ul style="list-style-type: none"> <li>-Capo in maglia</li> <li>-Bottoni sul davanti</li> <li>-Tessuto a costine su polsini, scollo e bordo inferiore</li> <li>-2 taschi frontali</li> <li>-Lunghezza approx:66cm</li> <li>M3 LARGA</li> <li>- Knit garment</li> <li>- Buttons on the front</li> <li>- Ribbed armhole and hem</li> <li>- 2 front pockets</li> <li>- Approximate length: 70cm   M3 LOOSE FIT</li> </ul>	<p><b>102800 P79</b></p>  <ul style="list-style-type: none"> <li>-Capo in maglia</li> <li>-Bottoni sul davanti</li> <li>-Tessuto a costine su polsini, scollo e bordo inferiore</li> <li>-2 taschi frontali</li> <li>-Lunghezza approx:70cm</li> <li>H2 SEMI-ADERENTE</li> <li>- Thick knit garment</li> <li>- Front zipper</li> <li>- Ribbed neck, armhole, and hem</li> <li>- Approximate length: 70cm</li> <li>- H2 SEMI-FITTED</li> </ul>	<p><b>102900 P79</b></p>  <ul style="list-style-type: none"> <li>-Capo in maglia</li> <li>-Bottoni sul davanti</li> <li>-Tessuto a costine su polsini, scollo e bordo inferiore</li> <li>-2 taschi frontali</li> <li>-Lunghezza approx:66cm</li> <li>H2 SEMI-ADERENTE</li> <li>- Thick knit garment</li> <li>- Front zipper</li> <li>- Ribbed neck, armhole, and hem</li> <li>- Approximate length: 66cm</li> <li>- M2 SEMI-FITTED</li> </ul>	<p><b>103100 P78</b></p>  <ul style="list-style-type: none"> <li>-Capo in maglia</li> <li>-Bottoni sul davanti</li> <li>-Tessuto a costine su polsini, scollo e bordo inferiore</li> <li>-2 taschi frontali</li> <li>-Lunghezza approx:66cm</li> <li>H2 SEMI-ADERENTE</li> <li>- Thin knit garment</li> <li>- Front zipper</li> <li>- Ribbed armhole and hem</li> <li>- Approximate length: 66cm</li> <li>- M2 SEMI-FITTED</li> </ul>	<p><b>103200 P78</b></p>  <ul style="list-style-type: none"> <li>-Capo in maglia</li> <li>-Bottoni sul davanti</li> <li>-Tessuto a costine su polsini, scollo e bordo inferiore</li> <li>-2 taschi frontali</li> <li>-Lunghezza approx:70cm</li> <li>H2 SEMI-ADERENTE</li> <li>- Thin knit garment</li> <li>- Front zipper</li> <li>- Ribbed neck, armhole, and hem</li> <li>- Approximate length: 70cm</li> <li>- H2 SEMI-FITTED</li> </ul>
---	--	---	--	--	--	--	---

<p><b>103300 P80</b></p>  <ul style="list-style-type: none"> <li>-Capo in maglia</li> <li>-Tessuto a costine su polsini, scollo e bordo inferiore</li> <li>-Lunghezza approx:73cm</li> <li>H2 SEMI-ADERENTE</li> <li>- Knit garment</li> <li>- Ribbed cuffs, neckline, and hem</li> <li>- Approximate length: 73cm</li> <li>- M3 LOOSE FIT</li> </ul>	<p><b>120001 P75</b></p>  <ul style="list-style-type: none"> <li>-Capo in maglia smanicato</li> <li>-2 Taschini sul davanti</li> <li>-Lunghezza approx:84cm</li> <li>M3 LARGA</li> <li>- Sleeveless knit garment</li> <li>- 2 front pockets</li> <li>- Approximate length: 84cm</li> <li>- M3 LOOSE FIT</li> </ul>	<p><b>120002 P77</b></p>  <ul style="list-style-type: none"> <li>-Capo in maglia</li> <li>-2 Taschini sul davanti</li> <li>-Lunghezza approx:84cm</li> <li>M3 LARGA</li> <li>- Knit garment</li> <li>- 2 front pockets</li> <li>- Approximate length: 84cm</li> <li>- M3 LOOSE FIT</li> </ul>	<p><b>120003 P77</b></p>  <ul style="list-style-type: none"> <li>-Capo in maglia</li> <li>-Bottoni sul davanti</li> <li>-Tessuto a costine su polsini e bordo inferiore</li> <li>-Lunghezza approx:68cm</li> <li>H2 SEMI-ADERENTE</li> <li>- Knit garment</li> <li>- Front buttons</li> <li>- Ribbed cuffs and hem</li> <li>- Approximate length: 68cm</li> <li>- H2 SEMI-FITTED</li> </ul>	<p><b>120004 P75</b></p>  <ul style="list-style-type: none"> <li>-Capo in maglia</li> <li>-Bottoni sul davanti</li> <li>-Tessuto a costine su polsini e bordo inferiore</li> <li>-Lunghezza approx:68cm</li> <li>H2 SEMI-ADERENTE</li> <li>- Knit garment</li> <li>- Front buttons</li> <li>- Ribbed cuffs and hem</li> <li>- Approximate length: 68cm</li> <li>- H2 SEMI-FITTED</li> </ul>	<p><b>120005 P86</b></p>  <ul style="list-style-type: none"> <li>-Capo in maglia</li> <li>-Bottoni sul davanti</li> <li>-Tessuto a costine su polsini e bordo inferiore</li> <li>-Lunghezza approx:66cm</li> <li>H2 SEMI-ADERENTE</li> <li>- Knit garment</li> <li>- Front buttons</li> <li>- Ribbed cuffs and hem</li> <li>- Approximate length: 66cm</li> <li>- M2 SEMI-FITTED</li> </ul>	<p><b>210002 P56</b></p>  <ul style="list-style-type: none"> <li>-Camicia a maniche corte</li> <li>-Taschino sulla sinistra</li> <li>-Sprone sulla schiena</li> <li>-Lunghezza approx:80cm</li> <li>H2 SEMI-ADERENTE</li> <li>- Short-sleeved shirt</li> <li>- Left chest pocket</li> <li>- Yoke on the back</li> <li>- Approximate length: 80cm</li> <li>- H2 SEMI-FITTED</li> </ul>	<p><b>210003 P64</b></p>  <ul style="list-style-type: none"> <li>-Maniche regolabili, bottoni e a pasticca</li> <li>-Polsini abbottonati</li> <li>-4 taschini sul davanti</li> <li>-Fasce sul davanti</li> <li>-Lunghezza approx:75cm</li> <li>H2 SEMI-ADERENTE</li> <li>- Adjustable sleeve with button</li> <li>- Buttoned cuff</li> <li>- 4 front pockets</li> <li>- Front pleats</li> <li>- Approximate length: 75cm</li> <li>- Semi-fitted H2 adjustment</li> </ul>
---	---	--	---	--	--	--	---

<p><b>210005 P64</b></p>  <ul style="list-style-type: none"> <li>-Maniche regolabili, bottoni e a pasticca</li> <li>-Polsini abbottonati</li> <li>-4 taschini sul davanti</li> <li>-Nervature sul davanti</li> <li>-Lunghezza approx:77cm</li> <li>H2 SEMI-ADERENTE</li> <li>- Adjustable sleeve, button tab</li> <li>- Buttoned cuff</li> <li>- 4 front pockets</li> <li>- Front ribs</li> <li>- Approximate length: 77cm</li> <li>- Semi-fitted H2</li> </ul>	<p><b>210006 P63</b></p>  <ul style="list-style-type: none"> <li>-Colletto alla coreana</li> <li>-Maniche regolabili, bottoni e a pasticca</li> <li>-Polsini abbottonati</li> <li>-Pince sul davanti e sul retro</li> <li>-Lunghezza approx:66cm</li> <li>H2 SEMI-ADERENTE</li> <li>- Mao collar</li> <li>- Adjustable sleeve, button tab</li> <li>- Buttoned cuff</li> <li>- Front and back notches</li> <li>- Approximate length: 66cm   Semi-fitted M2</li> </ul>	<p><b>210007 P63</b></p>  <ul style="list-style-type: none"> <li>-Colletto alla coreana</li> <li>-Maniche regolabili, bottoni e a pasticca</li> <li>-Polsini abbottonati</li> <li>-Pince sul davanti e sul retro</li> <li>-Lunghezza approx:75cm</li> <li>H2 SEMI-ADERENTE</li> <li>- Mao collar</li> <li>- Adjustable sleeve, button tab</li> <li>- Buttoned cuff</li> <li>- Back notches</li> <li>- Approximate length: 75cm   Semi-fitted H2</li> </ul>	<p><b>210008 P56</b></p>  <ul style="list-style-type: none"> <li>-Camicia a maniche corte</li> <li>-Taschino sulla sinistra</li> <li>-Pince sul retro</li> <li>-Lunghezza approx:65cm</li> <li>H2 SEMI-ADERENTE</li> <li>- Short-sleeved shirt</li> <li>- Left chest pocket</li> <li>- Front notches</li> <li>- Approximate length: 65cm</li> <li>- Semi-fitted M2</li> </ul>	<p><b>210009 P68</b></p>  <ul style="list-style-type: none"> <li>-Colletto alla coreana</li> <li>-Maniche regolabili, bottoni e a pasticca</li> <li>-Polsini abbottonati</li> <li>-Pince sul retro</li> <li>-Lunghezza approx:75cm</li> <li>H2 SEMI-ADERENTE</li> <li>- Mao collar</li> <li>- Adjustable sleeve, button tab</li> <li>- Buttoned cuff</li> <li>- Back notches</li> <li>- Approximate length: 75cm   Semi-fitted H2</li> </ul>	<p><b>210011 P68</b></p>  <ul style="list-style-type: none"> <li>-Colletto alla coreana</li> <li>-Maniche regolabili, bottoni e a pasticca</li> <li>-Polsini abbottonati</li> <li>-Pince sul retro e sul davanti</li> <li>-Lunghezza approx:66cm</li> <li>H2 SEMI-ADERENTE</li> <li>- Mao collar</li> <li>- Adjustable sleeve, button tab</li> <li>- Buttoned cuff</li> <li>- Front and back notches</li> <li>- Approximate length: 66cm   Semi-fitted M2</li> </ul>	<p><b>210012 P27</b></p>  <ul style="list-style-type: none"> <li>-Cross elastic</li> <li>-Maniche lunghe, polsini abbottonati</li> <li>-Pince sul davanti e sul retro</li> <li>-Lunghezza approx:65cm</li> <li>H2 SEMI-ADERENTE</li> <li>- Cross elastic</li> <li>- Long sleeve, buttoned cuff</li> <li>- Front and back notches</li> <li>- Approximate length: 65cm</li> <li>- Semi-fitted M2</li> </ul>	<p><b>210013 P64</b></p>  <ul style="list-style-type: none"> <li>-Maniche regolabili, bottoni e a pasticca</li> <li>-Polsini abbottonati</li> <li>-4 taschini sul davanti</li> <li>-Fasce sul davanti</li> <li>-Lunghezza approx:67cm</li> <li>M2 SEMI-ADERENTE</li> <li>- Adjustable sleeve, button tab</li> <li>- Buttoned cuff</li> <li>- 4 front pockets</li> <li>- Front pleats</li> <li>- Approximate length: 67cm   Semi-fitted M2</li> </ul>
---	---	---	---	---	---	--	---

<p><b>210014 P64</b></p>  <ul style="list-style-type: none"> <li>-Maniche regolabile, bottoni e a pasticca</li> <li>-Polsini abbottonati</li> <li>-4 taschini sul davanti</li> <li>-Lunghezza approx:70cm</li> <li>M2 SEMI-ADERENTE</li> <li>- Adjustable sleeve, button tab</li> <li>- Buttoned cuff</li> <li>- 4 front pockets</li> <li>- Front ribs</li> <li>- Approximate length: 70cm   M2</li> </ul>	<p><b>240001-240031 P95-5</b></p>  <ul style="list-style-type: none"> <li>-Elysian</li> <li>-Polsini abbottonati</li> <li>-Pince abbottonati</li> <li>-Pince sul davanti e sul retro</li> <li>-Lunghezza approx:65cm</li> <li>M2 SEMI-ADERENTE</li> <li>- Elysian</li> <li>- Buttoned cuff</li> <li>- Front and back notches</li> <li>- Approximate length: 65cm</li> <li>- Semi-fitted M2</li> </ul>	<p><b>240002 P94</b></p>  <ul style="list-style-type: none"> <li>-Elysian</li> <li>-Colletto alla coreana</li> <li>-Polsini abbottonati</li> <li>-Pince sul davanti e sul retro</li> <li>-Lunghezza approx:65cm</li> <li>M2 SEMI-ADERENTE</li> <li>- Elysian</li> <li>- Mao collar</li> <li>- Buttoned cuff</li> <li>- Front and back notches</li> <li>- Approximate length: 65cm   M2</li> </ul>	<p><b>240003 P97</b></p>  <ul style="list-style-type: none"> <li>-Elysian</li> <li>-Maniche corte</li> <li>-Pince sul davanti e sul retro</li> <li>-Lunghezza approx:65cm</li> <li>M2 SEMI-ADERENTE</li> <li>- Elysian</li> <li>- Short sleeve</li> <li>- Front and back notches</li> <li>- Approximate length: 65cm</li> <li>- Semi-fitted M2</li> </ul>	<p><b>240004 P97</b></p>  <ul style="list-style-type: none"> <li>-Elysian</li> <li>-Colletto a la coreana</li> <li>-Maniche corte</li> <li>-Pince sul davanti e sul retro</li> <li>-Lunghezza approx:65cm</li> <li>M2 SEMI-ADERENTE</li> <li>- Elysian</li> <li>- Mao collar</li> <li>- Short sleeve</li> <li>- Front and back</li> <li>- Approximate length: 65cm   M2</li> </ul>	<p><b>240005 P14</b></p>  <ul style="list-style-type: none"> <li>-Breeze</li> <li>-Maniche regolabili, bottoni a pasticca</li> <li>-Lunghezza approx:66cm</li> <li>M3 LARGA</li> <li>- Breeze</li> <li>- Adjustable sleeve, snap button</li> <li>- Approximate length: 66cm</li> <li>- Loose fit M3</li> </ul>	<p><b>240006 P17</b></p>  <ul style="list-style-type: none"> <li>-Breeze</li> <li>-Maniche 3/4, posini non abbottonati</li> <li>-Pince sul davanti</li> <li>-Lunghezza approx:66cm</li> <li>M2 SEMI-ADERENTE</li> <li>- Breeze</li> <li>- 3/4 sleeve, cuff without buttoning</li> <li>- Front notches</li> <li>- Approximate length: 66cm</li> <li>- Semi-fitted M2</li> </ul>	<p><b>240008 P9</b></p>  <ul style="list-style-type: none"> <li>-Elysian</li> <li>-Polsini abbottonati</li> <li>-Pince sul davanti e sul retro</li> <li>-Lunghezza approx:65cm</li> <li>M2 SEMI-ADERENTE</li> <li>- Elysian</li> <li>- Buttoned cuff</li> <li>- Front and back notches</li> <li>- Approximate length: 65cm</li> <li>- Semi-fitted M2</li> </ul>
<p><b>240009 P18</b></p>  <ul style="list-style-type: none"> <li>-Breeze</li> <li>-Maniche 3/4, posini abbottonati</li> <li>-Pince sul davanti e sul retro</li> <li>-Lunghezza approx:64cm</li> <li>M2 SEMI-ADERENTE</li> <li>- Breeze</li> <li>- 3/4 sleeve, buttoned cuff</li> <li>- Front and back notches</li> <li>- Approximate length: 64cm</li> <li>- Semi-fitted M2</li> </ul>	<p><b>240011 P41</b></p>  <ul style="list-style-type: none"> <li>-Maniche lunghe, posini abbottonati</li> <li>-Pince sul davanti e sul retro</li> <li>-Lunghezza approx:65cm</li> <li>M2 SEMI-ADERENTE</li> <li>- Long sleeve, buttoned cuff</li> <li>- Front and back notches</li> <li>- Approximate length: 65cm</li> <li>- Semi-fitted M2</li> </ul>	<p><b>240012 P25</b></p>  <ul style="list-style-type: none"> <li>-Cool Dry</li> <li>-Colletto alla coreana</li> <li>-Maniche lunghe, posini abbottonati</li> <li>-Pince sul davanti e sul retro</li> <li>-Lunghezza approx:65cm</li> <li>M2 SEMI-ADERENTE</li> <li>- Cool Dry</li> <li>- Mao collar</li> <li>- Long sleeve, buttoned cuff</li> <li>- Front and back notches</li> <li>- Approximate length: 65cm   M2</li> </ul>	<p><b>240013 P26</b></p>  <ul style="list-style-type: none"> <li>-Cool Dry</li> <li>-Colletto alla coreana</li> <li>-Maniche lunghe, posini abbottonati</li> <li>-Pince sul davanti e sul retro</li> <li>-Lunghezza approx:65cm</li> <li>M2 SEMI-ADERENTE</li> <li>- Cross elastik</li> <li>- Mao collar</li> <li>- Long sleeve, buttoned cuff</li> <li>- Front and back notches</li> <li>- Approximate length: 65cm   M2</li> </ul>	<p><b>240014 P70</b></p>  <ul style="list-style-type: none"> <li>-Maniche regolabili, bottoni a pasticca</li> <li>-Polsini abbottonati</li> <li>-4 taschini sul davanti</li> <li>-Lunghezza approx:74cm</li> <li>M2 SEMI-ADERENTE</li> <li>- Adjustable sleeve, button tab</li> <li>- Buttoned cuff</li> <li>- 4 front pockets</li> <li>- Front and back notches</li> <li>- Approximate length: 74cm</li> <li>- Semi-fitted M2</li> </ul>	<p><b>240015 P10</b></p>  <ul style="list-style-type: none"> <li>-Elysian</li> <li>-Maniche regolabili, bottoni a pasticca</li> <li>-Polsini abbottonati</li> <li>-Pince sul davanti e sul retro</li> <li>-Lunghezza approx:74cm</li> <li>M2 SEMI-ADERENTE</li> <li>- Elysian</li> <li>- Adjustable sleeve, button tab</li> <li>- Buttoned cuff</li> <li>- Front and back notches</li> <li>- Approximate length: 74cm   M2</li> </ul>	<p><b>240016 P38</b></p>  <ul style="list-style-type: none"> <li>-Elysian</li> <li>-Maniche regolabili, bottoni a pasticca</li> <li>-Polsini abbottonati</li> <li>-Pince sul davanti e sul retro</li> <li>-Lunghezza approx:65cm</li> <li>M2 SEMI-ADERENTE</li> <li>- Buttoned collar</li> <li>- Long sleeve, buttoned cuff.</li> <li>- Front and back notches.</li> <li>- Approximate length: 65cm.</li> <li>- Semi-fitted M2.</li> </ul>	<p><b>240017 P47</b></p>  <ul style="list-style-type: none"> <li>-Air Dry</li> <li>-Colletto con bottoni</li> <li>-Maniche lunghe, posini abbottonati</li> <li>-Pince sul davanti e sul retro</li> <li>-Lunghezza approx:65cm</li> <li>M2 SEMI-ADERENTE</li> <li>- Air Dry</li> <li>- Buttoned collar.</li> <li>- Long sleeve, buttoned cuff.</li> <li>- Front and back notches.</li> <li>- Approximate length: 65cm.   M2</li> </ul>
<p><b>240018 P6</b></p>  <ul style="list-style-type: none"> <li>-Elysian</li> <li>-Colletto a cratere</li> <li>-Maniche lunghe, posini abbottonati</li> <li>-Pince sul davanti e sul retro</li> <li>-Lunghezza approx:63cm</li> <li>M2 SEMI-ADERENTE</li> <li>- Elysian</li> <li>- Funnel neck</li> <li>- Long sleeve, buttoned cuff</li> <li>- Front and back notches</li> <li>- Approximate length: 63cm   M2</li> </ul>	<p><b>240019 P4</b></p>  <ul style="list-style-type: none"> <li>-Elysian</li> <li>-Maniche lunghe, posini abbottonati</li> <li>-Pince sul davanti e sul retro</li> <li>-Lunghezza approx:65cm</li> <li>M2 SEMI-ADERENTE</li> <li>- Elysian</li> <li>- Long sleeve, buttoned cuff</li> <li>- Front and back notches</li> <li>- Approximate length: 65cm</li> <li>- Semi-fitted M2</li> </ul>	<p><b>240021 P53</b></p>  <ul style="list-style-type: none"> <li>-Colletto con bottoni</li> <li>-Maniche lunghe, posini abbottonati</li> <li>-Pince sul davanti e sul retro</li> <li>-Lunghezza approx:65cm</li> <li>M2 SEMI-ADERENTE</li> <li>- Buttoned collar.</li> <li>- Long sleeve, buttoned cuff</li> <li>- Front notches and back pleat</li> <li>- Approximate length: 65cm</li> <li>- Semi-fitted M2</li> </ul>	<p><b>240022 P44</b></p>  <ul style="list-style-type: none"> <li>-Colletto alla coreana incrociato</li> <li>-Maniche lunghe, posini abbottonati</li> <li>-Pince sul davanti e sul retro</li> <li>-Lunghezza approx:65cm</li> <li>M2 SEMI-ADERENTE</li> <li>- Crossed Mao collar</li> <li>- Long sleeve, buttoned cuff</li> <li>- Front and back notches</li> <li>- Approximate length: 65cm</li> <li>- Semi-fitted M2</li> </ul>	<p><b>240023 P45</b></p>  <ul style="list-style-type: none"> <li>-Collare del camino</li> <li>-Maniche lunghe, posini abbottonati</li> <li>-Pince sul davanti e sul retro</li> <li>-Lunghezza approx:65cm</li> <li>M2 SEMI-ADERENTE</li> <li>- Funnel neck</li> <li>- Long sleeve, buttoned cuff</li> <li>- Front and back notches</li> <li>- Approximate length: 65cm</li> <li>- Semi-fitted M2</li> </ul>	<p><b>240024 P39</b></p>  <ul style="list-style-type: none"> <li>-Colletto alla coreana incrociato</li> <li>-Maniche lunghe, posini abbottonati</li> <li>-Pince sul davanti e sul retro</li> <li>-Lunghezza approx:65cm</li> <li>M2 SEMI-ADERENTE</li> <li>- Mao collar</li> <li>- Long sleeve, buttoned cuff</li> <li>- Front and back notches</li> <li>- Approximate length: 65cm</li> <li>- Semi-fitted M2</li> </ul>	<p><b>240025 P34</b></p>  <ul style="list-style-type: none"> <li>-Colletto con bottoni</li> <li>-2 taschini sul davanti</li> <li>-Maniche lunghe, posini abbottonati</li> <li>-Pince sul davanti e sul retro</li> <li>-Lunghezza approx:65cm</li> <li>M2 SEMI-ADERENTE</li> <li>- Mao collar</li> <li>- Long sleeve, buttoned cuff</li> <li>- 2 front pockets</li> <li>- Long sleeve, buttoned cuff</li> <li>- Front notches and back pleat</li> <li>- Approximate length: 65cm   M2</li> </ul>	<p><b>240026 P31</b></p>  <ul style="list-style-type: none"> <li>-Colletto a la coreana</li> <li>-Maniche lunghe, posini abbottonati</li> <li>-Pince sul davanti e sul retro</li> <li>-Lunghezza approx:65cm</li> <li>M2 SEMI-ADERENTE</li> <li>- Mao collar</li> <li>- Long sleeve, buttoned cuff</li> <li>- Front and back notches</li> <li>- Approximate length: 65cm</li> <li>- Semi-fitted M2</li> </ul>
<p><b>240027 P30</b></p>  <ul style="list-style-type: none"> <li>-Colletto a la coreana</li> <li>-Maniche lunghe, posini abbottonati</li> <li>-Pince sul davanti e sul retro</li> <li>-Lunghezza approx:65cm</li> <li>M2 SEMI-ADERENTE</li> <li>- Mao collar</li> <li>- Long sleeve, buttoned cuff</li> <li>- Front and back notches</li> <li>- Approximate length: 65cm</li> <li>- Semi-fitted M2</li> </ul>	<p><b>240028 P29</b></p>  <ul style="list-style-type: none"> <li>-Colletto con bottoni</li> <li>-Maniche lunghe, posini abbottonati</li> <li>-Pince sul davanti e sul retro</li> <li>-Lunghezza approx:65cm</li> <li>M2 SEMI-ADERENTE</li> <li>- Buttoned collar.</li> <li>- Long sleeves, buttoned cuffs</li> <li>- Front and back notches</li> <li>- Approximate length: 65cm</li> <li>- Semi-fitted M2</li> </ul>	<p><b>240029 P48</b></p>  <ul style="list-style-type: none"> <li>-Colletto con bottoni</li> <li>-Maniche lunghe, posini abbottonati</li> <li>-Pince sul davanti e sul retro</li> <li>-Lunghezza approx:65cm</li> <li>M2 SEMI-ADERENTE</li> <li>- Buttoned collar.</li> <li>- 2 front pockets.</li> <li>- Long sleeves, buttoned cuffs.</li> <li>- Front notches and back pleat.</li> <li>- Approximate length: 65cm.   M2</li> </ul>	<p><b>240100 P42</b></p>  <ul style="list-style-type: none"> <li>-Popeline tessuto jeans stinto</li> <li>-Maniche regolabili, bottoni a pasticca</li> <li>-Polsini abbottonati</li> <li>-Pince sul davanti e sul retro</li> <li>-Lunghezza approx:68cm</li> <li>M2 SEMI-ADERENTE</li> <li>- Washed denim poplin.</li> <li>- Adjustable sleeve, button tab.</li> <li>- Buttoned cuff.</li> <li>- Front and back notches.</li> <li>- Approximate length: 68cm.   M2</li> </ul>	<p><b>H1 ADERENTE UOMO</b>  <b>H2 SEMI-ADERENTE UOMO</b>  <b>H3 LARGA UOMO</b></p> <p><b>H1 TIGHT MAN</b>  <b>H2 SEMI-FITTED MAN</b>  <b>H3 LOOSE MAN</b></p>	<p><b>M1 ADERENTE DONNA</b>  <b>M2 SEMI-ADERENTE DONNA</b>  <b>M3 LARGA DONNA</b></p> <p><b>M1 TIGHT WOMAN</b>  <b>M2 SEMI-FITTED WOMAN</b>  <b>M3 LOOSE WOMAN</b></p>		





260029 P30



- Colletto alla coreana
- Slim fit
- Maniche lunghe, polsini abbottonati
- Pince e sprone sul retro
- Lunghezza aprox:78cm
- H1 ADERENTE
- Mao collar
- Slim fit
- Long sleeve, buttoned cuff
- Notches and yoke on the back
- Approximate length: 78cm | H1

260031 P29



- Slim fit
- Bottoni sul colletto
- Maniche lunghe, polsini abbottonati
- Pince e sprone sul retro
- Lunghezza aprox:78cm
- H1 ADERENTE
- Slim fit
- Buttons on collar
- Long sleeve, buttoned cuff
- Notches and yoke on the back
- Approximate length: 78cm | H1

260032 P48



- Slim fit
- Bottoni sul colletto
- 2 taschini sul petto
- Maniche lunghe, polsini abbottonati
- Pince e sprone sul retro
- Lunghezza aprox:78cm
- H1 ADERENTE
- Slim fit
- Buttons on collar
- 2 pockets on the chest
- Long sleeve, buttoned cuff
- Notches and yoke on the back
- Approximate length: 78cm | H1

260800 P42



- Popeline tessuto lavato
- Maniche regolabili, bottoni a pasticca
- Polsini abbottonati
- Pince e sprone sul retro
- Lunghezza aprox:78cm
- H1 ADERENTE
- Washed denim poplin
- Adjustable sleeve, buttoned tab
- Buttoned cuff
- Notches and yoke on the back
- Approximate length: 78cm | H1

261100 P33



- Tessuto riciclato
- Maniche regolabili, bottoni a pasticca
- Polsini abbottonati
- Pince e sprone sul retro
- Lunghezza aprox:78cm
- H1 ADERENTE
- Recycled fabric
- Long sleeve, buttoned cuff
- notches and yoke on the back
- Approximate length: 78cm
- Fitted H1

288000 P93



- Maniche corte
- Pince sul davanti e sul retro
- Lunghezza aprox:68cm
- M2 SEMI-ADERENTE
- Short sleeve
- Notches on the front and back
- Approximate length: 68cm
- Semi-fitted M2

288100 P91



- Maniche lunghe, polsini abbottonati
- Pince e sprone sul retro
- Lunghezza aprox:68cm
- M2 SEMI-ADERENTE
- Long sleeve, buttoned cuff
- notches and yoke on the back
- Approximate length: 68cm
- Semi-fitted M2

288200 P91



- Colletto alla coreana
- Maniche lunghe, polsini abbottonati
- Pince e sprone sul retro
- Lunghezza aprox:68cm
- M2 SEMI-ADERENTE
- Mao collar
- Long sleeve, buttoned cuff
- Notches and yoke on the back
- Approximate length: 68cm
- Semi-fitted M2

288300 P93



- Colletto alla coreana
- Maniche corte
- Pince sul davanti e sul retro
- Lunghezza aprox:68cm
- M2 SEMI-ADERENTE
- Mao collar
- Short sleeve
- Notches on the front and back
- Approximate length: 68cm
- Semi-fitted M2

288400 P89



- Bottoni sul colletto
- Maniche lunghe, polsini abbottonati
- Pince sul davanti e sul retro
- Lunghezza aprox:68cm
- M2 SEMI-ADERENTE
- Buttons on collar
- Long sleeve, buttoned cuff
- notches on the front and back
- Approximate length: 68cm
- Semi-fitted M2

295000 P91



- Maniche lunghe, polsini abbottonati
- Taschino sulla sinistra
- Sprone sul retro
- Lunghezza aprox:81cm
- H2 SEMI-ADERENTE
- Long sleeve, buttoned cuff
- Pocket on the left chest
- Yoke on the back
- Approximate length: 81cm
- Semi-fitted H2

295100 P93



- Maniche corte
- Taschino sulla sinistra
- Sprone sul retro
- Lunghezza aprox:81cm
- H2 SEMI-ADERENTE
- Short sleeve
- Pocket on the left chest
- Yoke on the back
- Approximate length: 81cm
- Semi-fitted H2

295200 P89



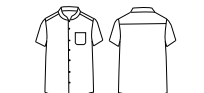
- Bottoni sul colletto
- Maniche lunghe, polsini abbottonati
- Pince e sprone sul retro
- Lunghezza aprox:81cm
- H2 SEMI-ADERENTE
- Buttons on collar
- Long sleeve, buttoned cuff
- Notches and yoke on the back
- Approximate length: 81cm
- Semi-fitted H2

296000 P91



- Colletto alla coreana
- Maniche lunghe, polsini abbottonati
- Taschino sulla sinistra
- Sprone sul retro
- Lunghezza aprox:81cm
- H2 SEMI-ADERENTE
- Mao collar
- Long sleeve, buttoned cuff
- Pocket on the left chest
- Yoke on the back
- Approximate length: 81cm | H2

296100 P93



- Colletto alla coreana
- Maniche corte
- Taschino sulla sinistra
- Sprone sul retro
- Lunghezza aprox:81cm
- H2 SEMI-ADERENTE
- Mao collar
- Short sleeve
- Pocket on the left chest
- Yoke on the back
- Approximate length: 81cm | H2

298200 P43



- Slim fit
- Colletto alla coreana
- Maniche lunghe, polsini abbottonati
- Taschino sulla sinistra
- Pince sul retro
- Lunghezza aprox:75cm
- H2 SEMI-ADERENTE
- Slim fit
- Mao collar
- Long sleeve, buttoned cuff
- Pocket on the left chest
- Yoke on the back
- Approximate length: 75cm | H2

298900 P66



- Slim fit
- Colletto alla coreana
- Maniche lunghe, polsini abbottonati
- Pince sul retro
- Lunghezza aprox:75cm
- H2 SEMI-ADERENTE
- Slim fit
- Mao collar
- Long sleeve, buttoned cuff
- Notches on the back
- Approximate length: 75cm | H2

299300 P36



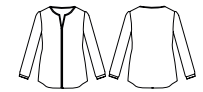
- Slim fit
- Colletto alla coreana
- Maniche lunghe, polsini abbottonati
- Pince e sprone sul retro
- Lunghezza aprox:75cm
- H2 SEMI-ADERENTE
- Slim fit
- Mao collar
- Long sleeve, buttoned cuff
- notches and yoke on the back
- Approximate length: 75cm | H2

600054 P51



- Slim fit
- Controspalline sulle spalle
- Maniche corte
- 4 taschini sul davanti
- Pince e sprone sul retro
- Lunghezza aprox:78cm
- H2 SEMI-ADERENTE
- Slim fit
- Epaulettes on shoulders
- Short sleeve
- 4 pockets on the front
- Darts and yoke on the back
- Approximate length: 78cm | H2

651400 P54



- Maniche lunghe, polsini abbottonati
- Lunghezza aprox:65cm
- M2 SEMI-ADERENTE
- Long sleeve, buttoned cuff
- Approximate length: 65cm
- Semi-fitted M2

# gary's

WORKWEAR

garysworkwear.com

## La nostra azienda

Il continuo impegno per l'innovazione e la qualità (sia nel servizio che nei materiali) ha mantenuto l'azienda in costante sviluppo alla ricerca dell'eccellenza, ottenendo così materie prime di alto livello nelle mani di uno straordinario team umano impegnato con l'azienda.

Nel 2019, dopo essersi affermata nella leadership del settore a livello nazionale ed aver intrattenuto per anni rapporti commerciali fuori dalla Spagna, è iniziata su larga scala l'internazionalizzazione dell'azienda.

La nostra missione è la progettazione e produzione di abbigliamento professionale, offrendo un ottimo servizio e un ampio catalogo di prodotti per i lavoratori più esigenti.

Gary's è il principale riferimento nella moda professionale, sia a livello nazionale che internazionale, offrendo differenziazione in termini di design, comfort, protezione e durata a tutti i lavoratori che indossano i nostri capi.

L'azienda guarda al futuro preservando i valori della propria identità.

**L'ECCELLENZA SUL LAVORO COSTITUISCE L'ESSENZA DELLE UNIFORMI GARY, ATTRAVERSO I VALORI CHE LA GUIDANO; INTEGRITÀ, QUALITÀ, INNOVAZIONE, VICINANZA E PASSIONE.**

Siamo una scommessa sicura per tutti i professionisti che desiderano vestirsi in modo confortevole e moderno nella loro vita lavorativa quotidiana.

## The company

*The continuous commitment to innovation and quality (both in service and materials) has kept the company in a constant development in the search of excellence. That is how we get a high-level raw materials in the hands of an extraordinary human team committed with the company.*

*In 2019, after establishing itself as the leader of the industry at the national market, and years of successful business relationships abroad, Gary's Workwear began its large-scale expansion. Our mission is offering a great service and a wide range of products for the most challenging workers with the nicest designs and a perfect product finish on all our professional garments.*

*Gary's is the leader in the workwear market because of its stylish designs, in the national area as well as on the international. We provide unique designs which are very wellknown for its comfort, protection and durability.*

*Gary's Workwear moves ahead into the future, but keeping the same values of its identity. EXCELLENCE AT WORK IS THE ESSENCE OF GARY'S WORKWEAR.*

*We are a safe bet for all professionals who want to dress in a comfortable, modern and safe way during their day to day working hours.*

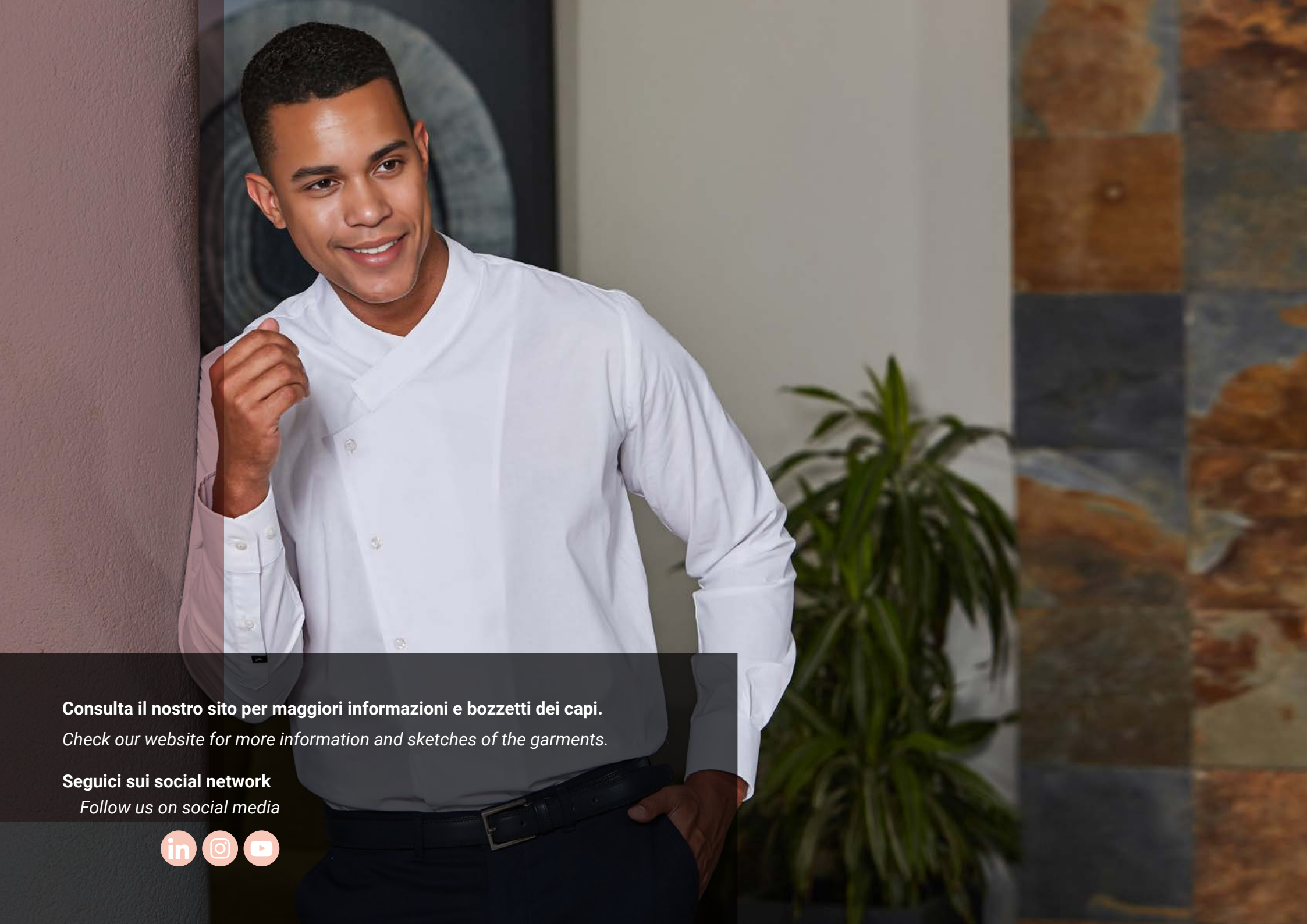
## Hai delle idee?

*Got any idea?*

Creiamo qualsiasi disegno tu immagini. Stampe personalizzate, modelli personalizzati, personalizzazione di componenti, ricami o serigrafie. La fantasia non ha limiti e insieme possiamo trasformare la tua idea in realtà.

*We can create every design that you could imagine like prints, patterns, accessories, embroideries or screen printing. Imagination has no limits and together we can make your ideas come true.*





**Consulta il nostro sito per maggiori informazioni e bozzetti dei capi.**

*Check our website for more information and sketches of the garments.*

**Seguici sui social network**

*Follow us on social media*





8429935539317

Uniformes Gary's

La riproduzione totale o parziale del presente catalogo, nonché il suo trattamento in qualsiasi forma e con qualsiasi mezzo, è vietata senza l'espreso consenso scritto della società titolare dei diritti d'autore.

*The total or partial reproduction is forbidden of this catalogue, as well as its treatment of any form or by any means without the express written permission of the company copyright holder.*